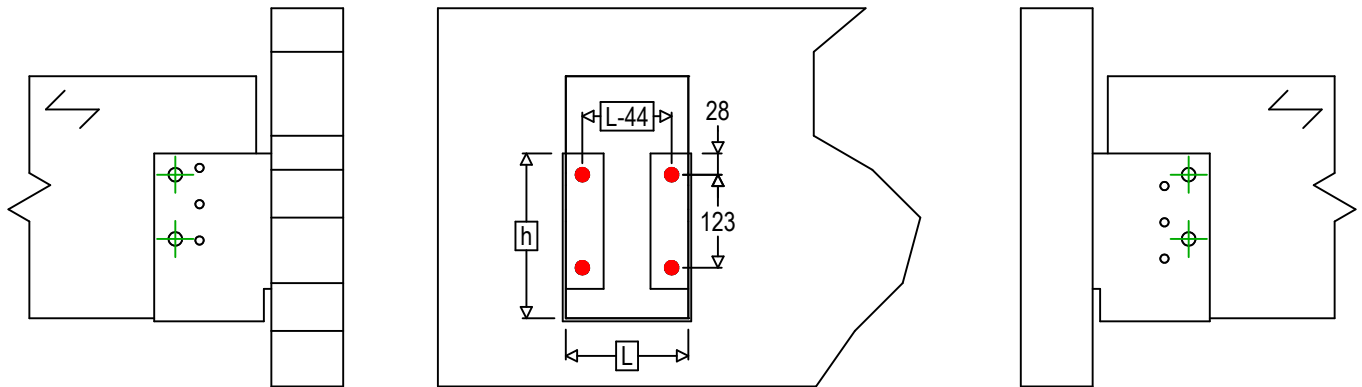
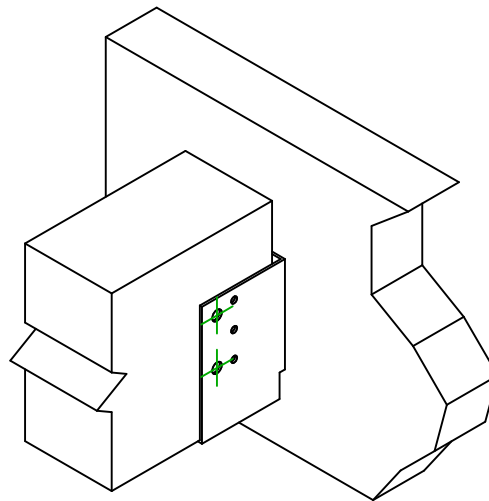




Référence =	GBI600	
Fixations =	Bois sur support rigide	Solive sur poutre
Type de fixation =	Fixation sur support rigide	



$$h = (600 - L) / 2$$



	Symbole	Fixations	Fixations	Qté
Fixation(s) Porteur		FM753	FM 753 EVO M16X110/5	4
		LMAS	LMASM16	
		-	-	
Fixation(s) Porté		BSH	BSH16	2
		-	-	
		-	-	