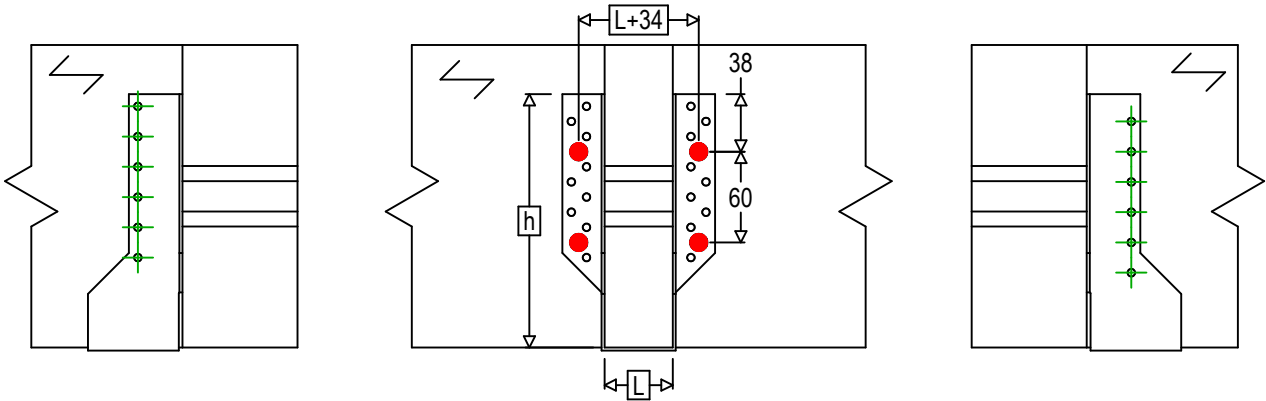
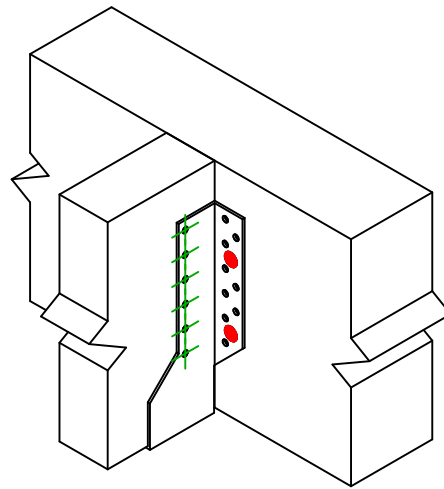




<b>Art. Nr.</b>	<b>=</b>	BSNN380	
<b>Festemidler</b>	<b>=</b>	Tre til Tre	Bjelke til bjelke
<b>Type festemiddel</b>	<b>=</b>	Montering med SSH	



$$h = (380 - L) / 2$$



Festemidler i hovedbjelke	Symbol	Festemidler	Festemidler		Antall		
		SSH		SSH10.0X40		4	
-		-	-				
-		-	-				
Festemidler i sekundærbjelke	Symbol	Festemidler	L < 64mm	L > 64mm	Antall		
		CNA		CNA4.0X35		CNA4.0X50	12
		CSA		CSA5.0X35		CSA5.0X40	