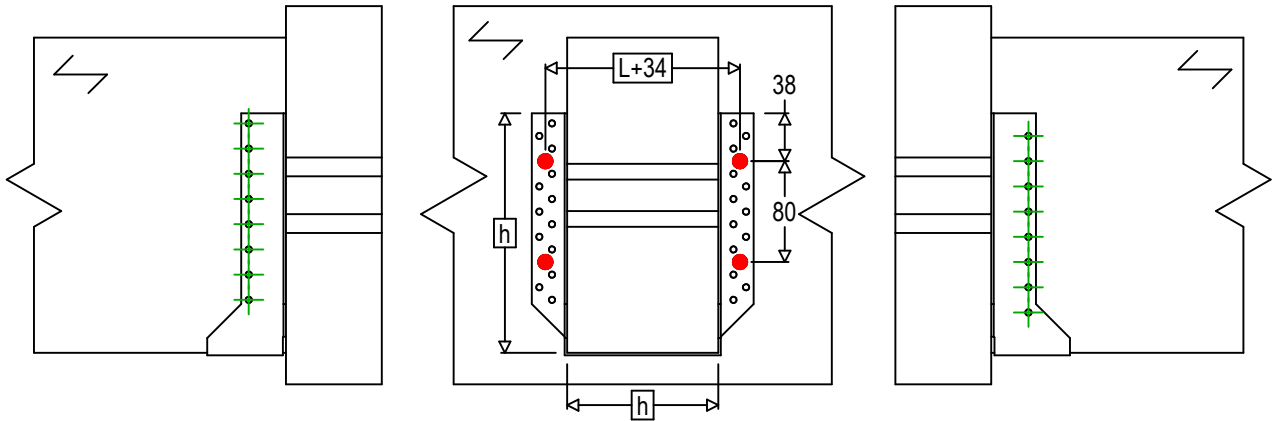
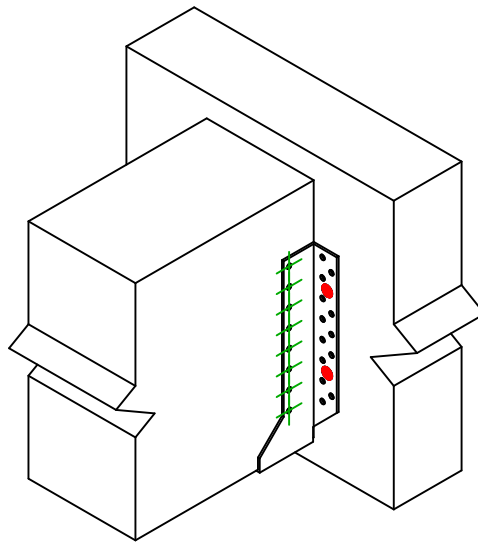



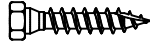

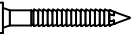

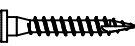


Referencia =	BSNN500	
Fijaciones =	Madera sobre madera	Viga sobre viga
Sistema de fijación =	Fijación con SSH	



$$h = (500 - L) / 2$$



Fijaciones Soporte	Símbolo	Fijaciones	Fijaciones		Ctd	
	●	SSH  	SSH10.0x40			4
		-	-			
Fijaciones Viga Secundaria	Símbolo	Fijaciones	L < 64mm	L > 64mm	Ctd	
	⊕	CNA  	CNA4.0X35	CNA4.0X50		16
		CSA  	CSA5.0X35	CSA5.0X40		