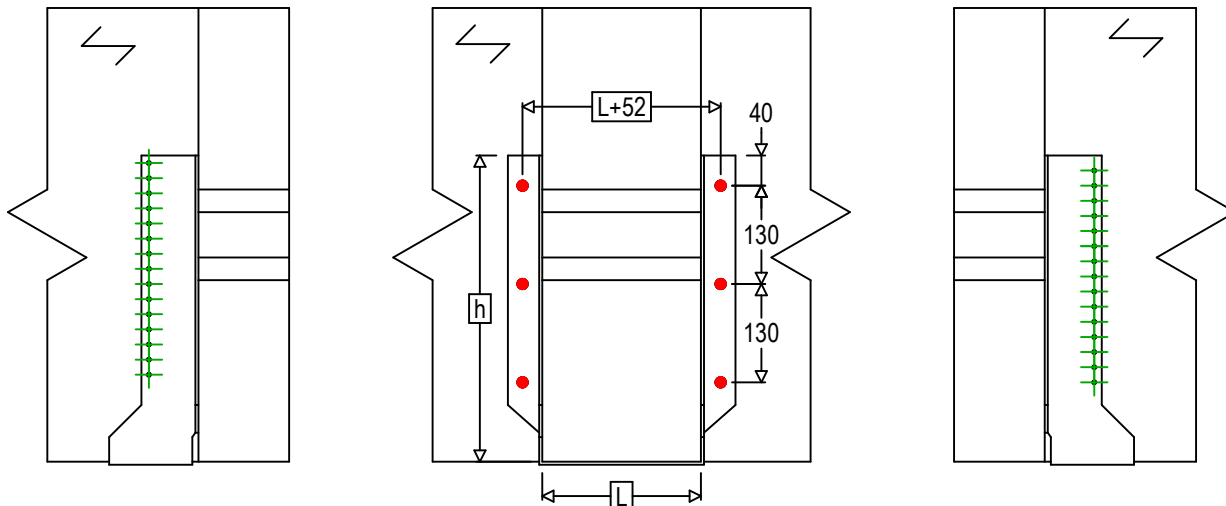
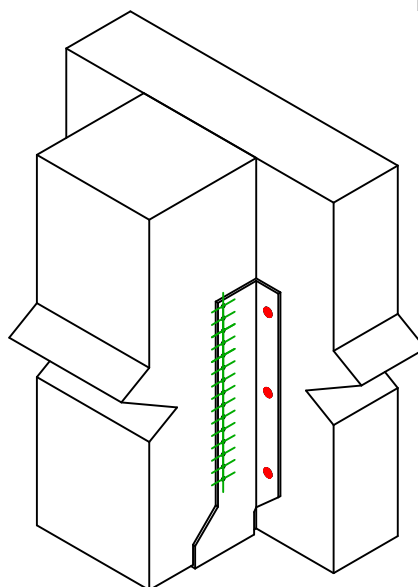




Art. Nr.	=	GSEXL1020	
Festemidler	=	Tre til Tre	Bjelke til bjelke
Type festemiddel	=	Montering med SSH	



$$h = (1020 - L) / 2$$



Festemidler i hovedbjelke	Symbol	Festemidler	Festemidler		Antall	
	●	SSH	SSH12.0X60			6
		-	-			
Festemidler i sekundærbjelke	Symbol	Festemidler	L < 64mm	L > 64mm	Antall	
	⊕	CNA	CNA4.0X35	CNA4.0X50		30
		CSA	CSA5.0X35	CSA5.0X40		